

Bear Adventure

STATION GUIDE

1 2 3

Want to learn more about playing math?
Visit www.zenomath.org

Overview

This guide provides information on how to setup and facilitate a small group of 2-7 children or a center station to play the Zeno Game, Bear Adventure. At least one adult should be present when playing.

Some of these instructions assume that children can work cooperatively with one another. If that is not developmentally appropriate for the children you are working with, it may be best to have more adults to serve as the children's partners.

Small group play should last 5-10 minutes and should focus on no more than 2 game levels at a time.

When playing, refrain from using "no" to direct children. The word "no" does not provide children with any skills or verbal guidance.

It is critical that you play the game in your classroom for the week prior to sending it home to ensure that children are excited and comfortable to take it home and play with their families.



Goal

In this game your child will learn to count numbers up to 15 and match them to a group of objects.

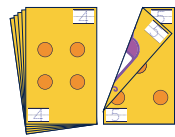
Before You Begin

Remember that it is important to give children time to freely play with the game materials and explore the game concept of counting and recognizing numbers.

Please ensure that children have had adequate time to explore the game and its concept prior to small groups.



Level 1



0-5 Yellow Cards x3



Bears x3

Flip over a yellow card so that the dots are face up. Ask the children to help you count the dots and cover them with bears as you do so.

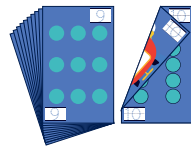


Talk about how many dots and bears the yellow card has. Play again with a new yellow card!



If children are ready for more of a challenge, allow them to work in pairs and give each pair their own set of yellow cards and bears. See if they can put the cards in order from least to greatest to create a 0-5 number line.

Level 2



0-10 Blue Cards x3

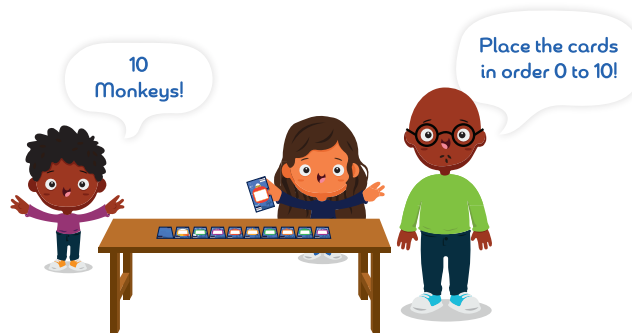


Bears x3

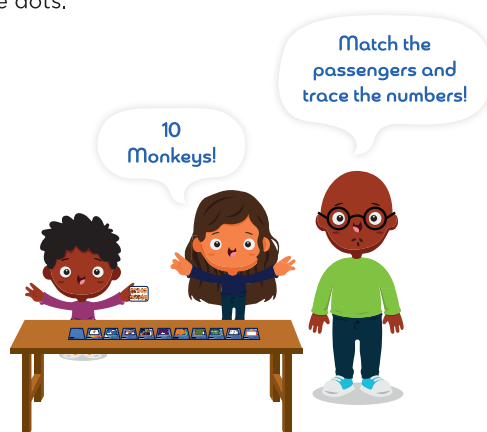


Passengers x3

Flip over all of the blue cards so that the dots are face down.

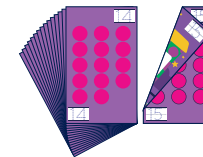


Ask the children to help you order the cards from 0 to 10. Have the children work to match the passenger cards to the blue cards. If children need more assistance, have them look at the dot side of the blue cards and count out bears to cover the dots.



If children are ready for more of a challenge, allow them to work in pairs and give each pair their own set of blue cards and passenger cards.

Level 3



0-15 Purple Cards x3



Bears x3

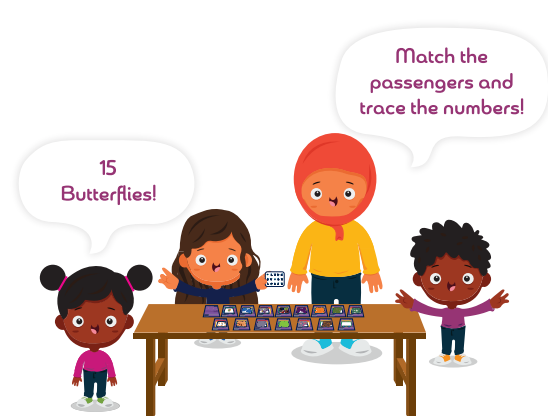


Passengers x3

Flip over all of the purple cards so that the dots are face down. Ask the children to help you order the cards from 0 to 15.



Have the children work to match the passenger cards to the purple cards. If children need more assistance, have them look at the dot side of the purple cards and count out bears to cover the dots.



If children are ready for more of a challenge, allow them to work in pairs and give each pair their own set of purple cards and passenger cards.